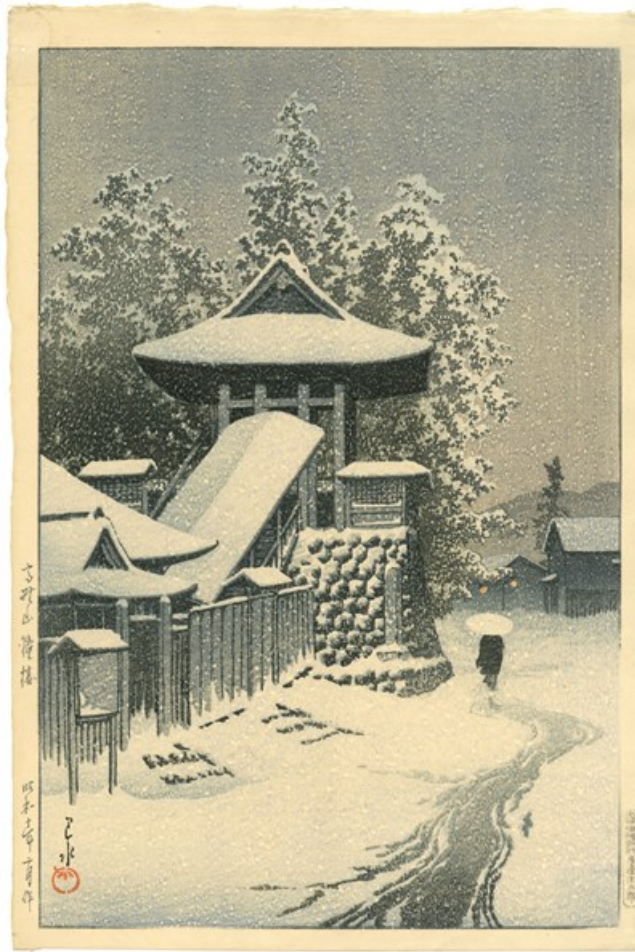


PAN

AMSTERDAM

HOTEI JAPANESE PRINTS



Bell Tower at Mt. Koya (Koyasan shoro)

Kawase Hasui (1883-1957)

Bell Tower at Mt. Koya (Koyasan shoro), from the series Collected Views of Japan II, Kansai Edition (Nihon fukei shu II, Kansai hen).

Published by Watanabe Shozaburo in February 1935.

Signed: Hasui with artist's seal Sui.

Size: Oban tate-e.

Kawase Hasui (1883-1957)

Bell Tower at Mt. Koya (Koyasan shoro), from the series Collected Views of Japan II, Kansai Edition (Nihon fukei shu II, Kansai hen).

Published by Watanabe Shozaburo in February 1935.

Signed: Hasui with artist's seal Sui.

Size: Oban tate-e.

References: K.H. Brown, Kawase Hasui. *The Complete Woodblock Prints* (2003), cat. 330.