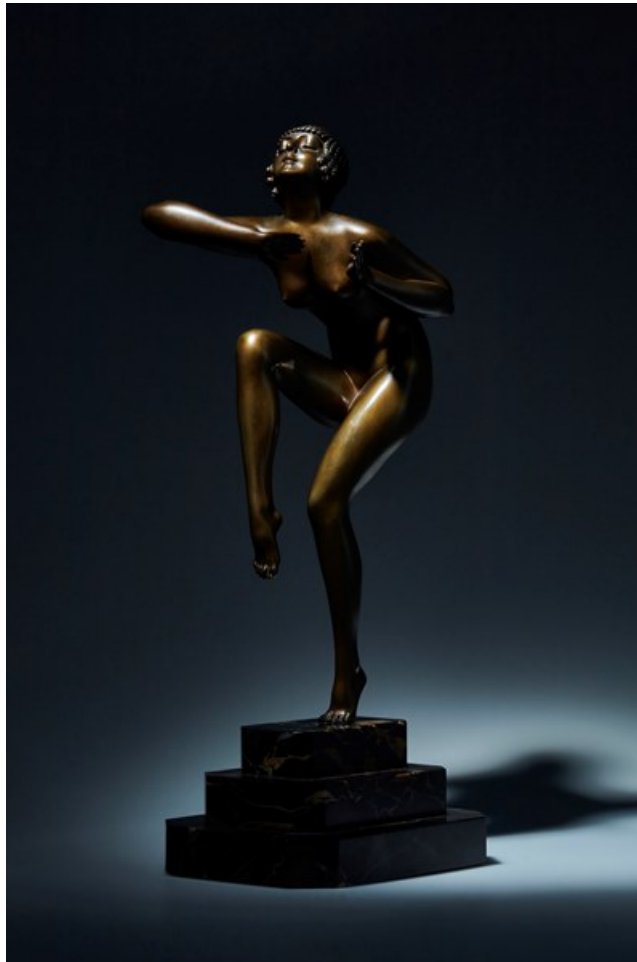


PAN

AMSTERDAM

ANTIQUES EMPORIUM



Bronze Art Deco statue "Rapture" – Édition Etling, Paris

Designer: Demetre H. Chiparus
Édition: Edmund Etling, Paris
Model: "Rapture"
Signature: D H Chiparus & Etling, Paris
Style: Art Deco
Material: Bronze and marble
Color: Bronze patina, black marble with golden veins
Period: 1920 – 1929

Demêtre Chiparus, a Romanian-born sculptor active during the early 20th century, is celebrated for his exquisite bronze and ivory sculptures that epitomize the elegance and style of the Art Deco period. Chiparus drew inspiration from a variety of sources, including the Ballets Russes, ancient Egyptian art, and the vibrant culture of the Roaring Twenties. His sculptures are characterized by their intricate details, dynamic poses, and a seamless blend of materials.

One of Chiparus's notable works is this bronze sculpture titled "Rapture," which exemplifies his

artistic mastery and the luxurious aesthetic of the era. "Rapture" captures a moment of ethereal beauty and grace, with the figure poised in a delicate, almost balletic stance, exuding an air of refined sophistication. The sculpture's intricate detailing, from the flowing garments to the expressive facial features, showcases Chiparus's meticulous craftsmanship and his ability to imbue his works with a sense of liveliness and emotion.

Chiparus frequently collaborated with the Parisian foundry Etling, which played a crucial role in bringing his artistic visions to life. Etling, established by Edmond Etling, was a renowned producer and distributor of fine art and decorative objects during the early 20th century. The foundry was known for its high-quality production techniques and its roster of talented artists, including Chiparus. This collaboration allowed Chiparus to transform his detailed models into stunning bronze sculptures, ensuring that his intricate designs were preserved and accentuated in the final pieces.